

APPENDIX G

FACILITIES SELF-EVALUATION FINDINGS

PRIORITY 1 APPROACH AND ENTRANCE BARRIERS

Courthouse

- There should be level landings at top of curb ramps/flares.

Armory Annex

- There are 2 accessible parking spaces and should be 3 (58 total spaces).
- Door closer on West entrance door needs adjusted so that closure takes ≥ 5 seconds from 90 degrees to 12 degrees from latch.

Multi Services Building

- There should be at least 1 van accessible parking space and sign.
- Lines need to be painted for accessible parking spaces.
- There is no access aisle adjoining an accessible route to main entrance.
- Edges of carpet/mats need secured at edges.

Eagles Bluff

- One of the two accessible spaces must be configured as Van Accessible Parking space.
- Bottom of accessible parking sign needs raised to appropriate height.
- Edges of carpet/mats need secured at edges.

Riverside Park

- No accessible route to shelter house: No designated parking, no accessible parking, access aisles or signs. No stable, firm and slip-resistant route to shelter house.

Wilkerson Park

- No designated parking spaces for public parking.
- No accessible parking spaces, access aisles, or signs.
- Route to restroom building and shelter house are non-existent.
- Surface of boat ramp is not stable, firm, and slip resistant. Ramp width of boat ramp does not extend at least 12 inches beyond inside face of handrail.

PRIORITY 2 ACCESS TO GOODS AND SERVICES

Courthouse

- Rails in meeting room need to be on both sides of ramp.
- Existing handrails in meeting room need to extend at least 12" beyond inside face of the handrails.
- Door closers throughout the building need adjusted.
- Height of operable parts need to be <=48 inches above the floor.

Multi Services Building

- Door hardware on door to radio communications room needs replaced. (Not operable with one hand and/or requires tight grasp, pinching and twisting of wrist.)

Prosecutor's Office

- Accessible route is not at least 36" wide.
- Fire extinguisher in lobby area protrudes more than 4" into the path.
- No tactile signs at all permanent rooms and spaces with raised characters and Braille.

Wilkerson Park

- Building isn't accessible.

PRIORITY 3 TOILET ROOMS

Courthouse

- Door closers need adjusted.
- Water closet in restroom near auxiliary courtroom in southeast hallway needs moved, and grab bars need moved.

Accessible public restrooms are near the main entrance. Restrooms in southeast hallway have been marked so that the public is aware that they are not public restrooms.

Armory Annex

- Door closers need adjusted.

Multi Services Building

- Operable parts of hand dryer or towel dispenser needs lowered to appropriate height.
- Water closet in men's restroom stall adjacent to garage needs adjusted to at least 59" deep.

Eagles Bluff

- Toilet paper dispenser needs to be moved to no less than 7" and no greater than 9" from the front of the water closet to centerline of dispenser.

Riverside Park

- Not applicable.

Wilkerson Park

- Access to building and toilet rooms do not meet code.

Prosecutor's Office

- No tactile signs at toilet rooms with raised characters and Braille.
- Door closers need adjusted.
- Grab bars need installed.
- Flush control needs moved.
- Partition doors are not self-closing.

PRIORITY 4 ADDITIONAL ACCESS

Multi Services Building

- Public telephone in conference room needs to be no higher than 48" above the floor.
- Conference room telephone does not have volume control and should be identified by pictogram
- At least one public telephone should have a TTY.

PHOTOS

COURTHOUSE

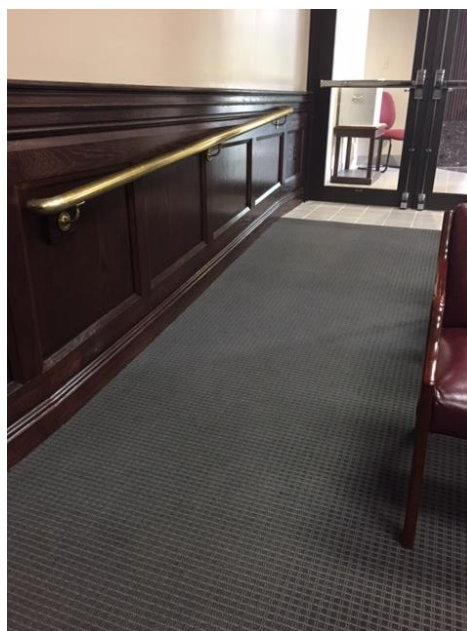
Curb ramp – from Northeast toward Entrance



Curb ramp – from Northwest toward Entrance



Meeting Room – ramps, handrails & landings (East & West entrances)



ARMORY ANNEX

Accessible parking and accessible routes to West & South entrances



MULTI SERVICES BUILDING

Parking spaces



Door between Radio Communication Room & EMS



EAGLES BLUFF PARK

Accessible parking spaces and walkway to facilities



RIVERSIDE PARK

Parking area and restroom building



Outdoor shelter



Boat ramp



WILKERSON PARK

Park layout



Parking area



Shelter and restrooms; play area behind



Boat ramp

